



FRUITPORT PUBLIC SCHOOLS

EDGEWOOD ELEMENTARY - 2025 BOND

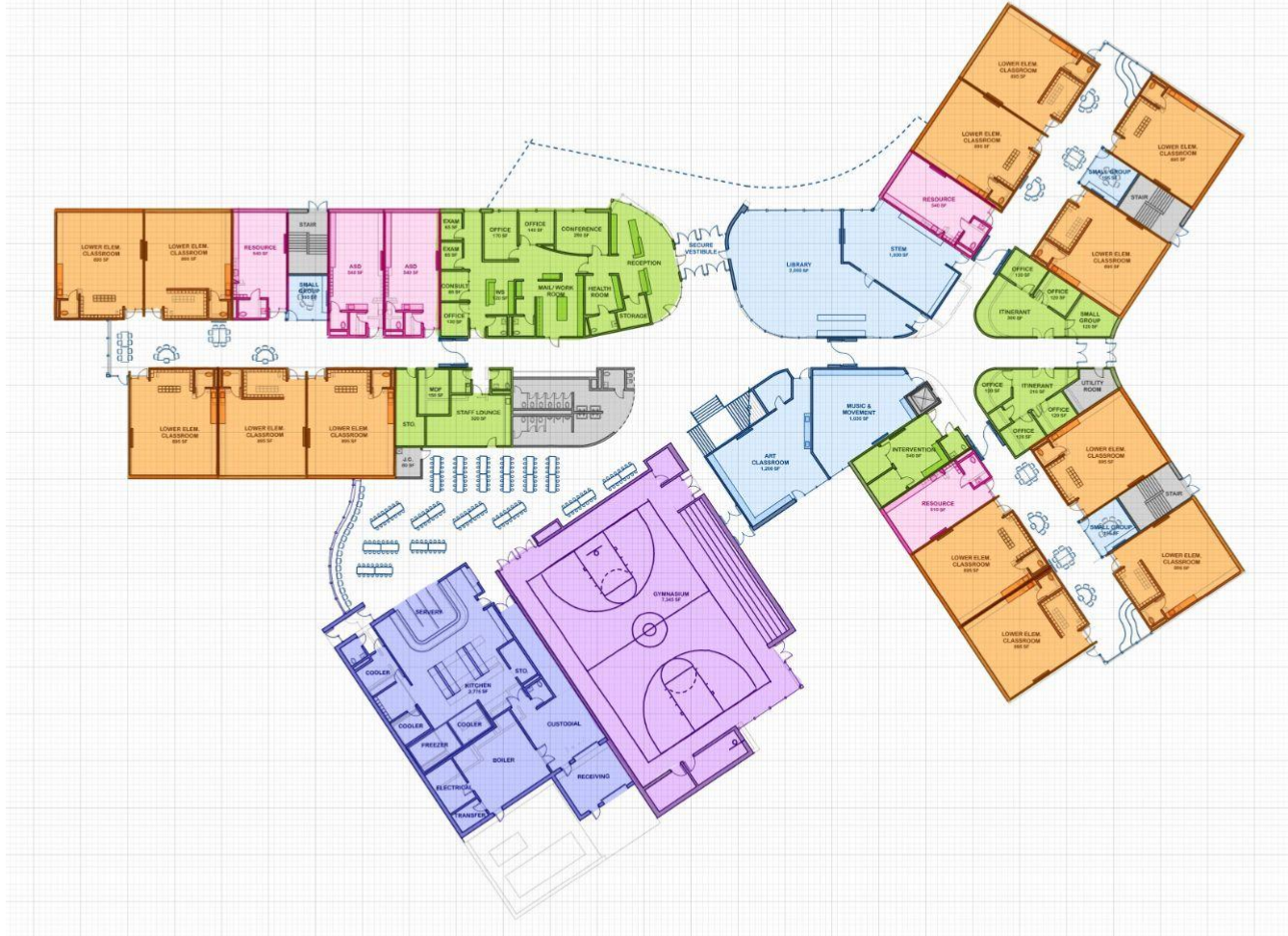
JANUARY 28, 2026

Fruitport Community Schools - Edgewood Elementary Design Schedule

		SD Mtg #2	SD Mtg #3	SD Mtg #4	SD Mtg #5	DD Mtg #1	DD Mtg #2	DD Mtg #3	DD Mtg #4	DD Mtg #5
	TIME / DATE	January 07	January 28	February 11	March 04	March 25	April 15	May 06	May 13	May 27
DESIGN	7:00 AM									
	7:30 AM									
	8:00 AM	Typical Classrooms	Review Updated Floor Plan	Building Floor Plan Review	SD Page Turn	SD Budget Review & Revisions	Typical Classrooms	Review Updated Floor Plan	DD Page Turn	DD Budget Review & Revisions
	8:30 AM									
	9:00 AM	Specials - Music	Building Exteriors	Site			Specials - Music	Building Exteriors		
	9:30 AM	Specials - Art					Specials - Art	Building Exteriors		
	10:00 AM	Specials - STEM	Building Interiors	Interiors			Specials - STEM	Building Interiors		
	10:30 AM	Specials - Gym			Specials - Gym	Building Interiors				
	11:00 AM	Media Center	Site	Building Ext./Massing	Media Center	Site				
	11:30 AM	Administration			Administration	Site				
	12:00 PM	Lunch	Lunch	Lunch			Lunch	Lunch		
	12:30 PM	Itinerant Staff	Technology	Building Operations			Itinerant Staff	Technology		
	1:00 PM									
	1:30 PM	Special Education	Mechanical	Next Steps			Special Education	Mechanical		
	2:00 PM									
	2:30 PM	Playgorunds	Building Operations	Playgorunds			Building Operations			
	3:00 PM	Cust./Maint.	Electrical	Cust./Maint.	Electrical					
	3:30 PM	Next Steps	Next Steps	Next Steps	Next Steps					

01

FLOOR PLAN





02

Building Exterior

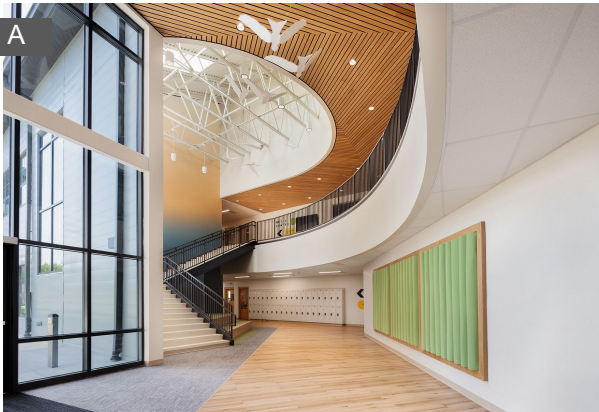




03

Building Interior









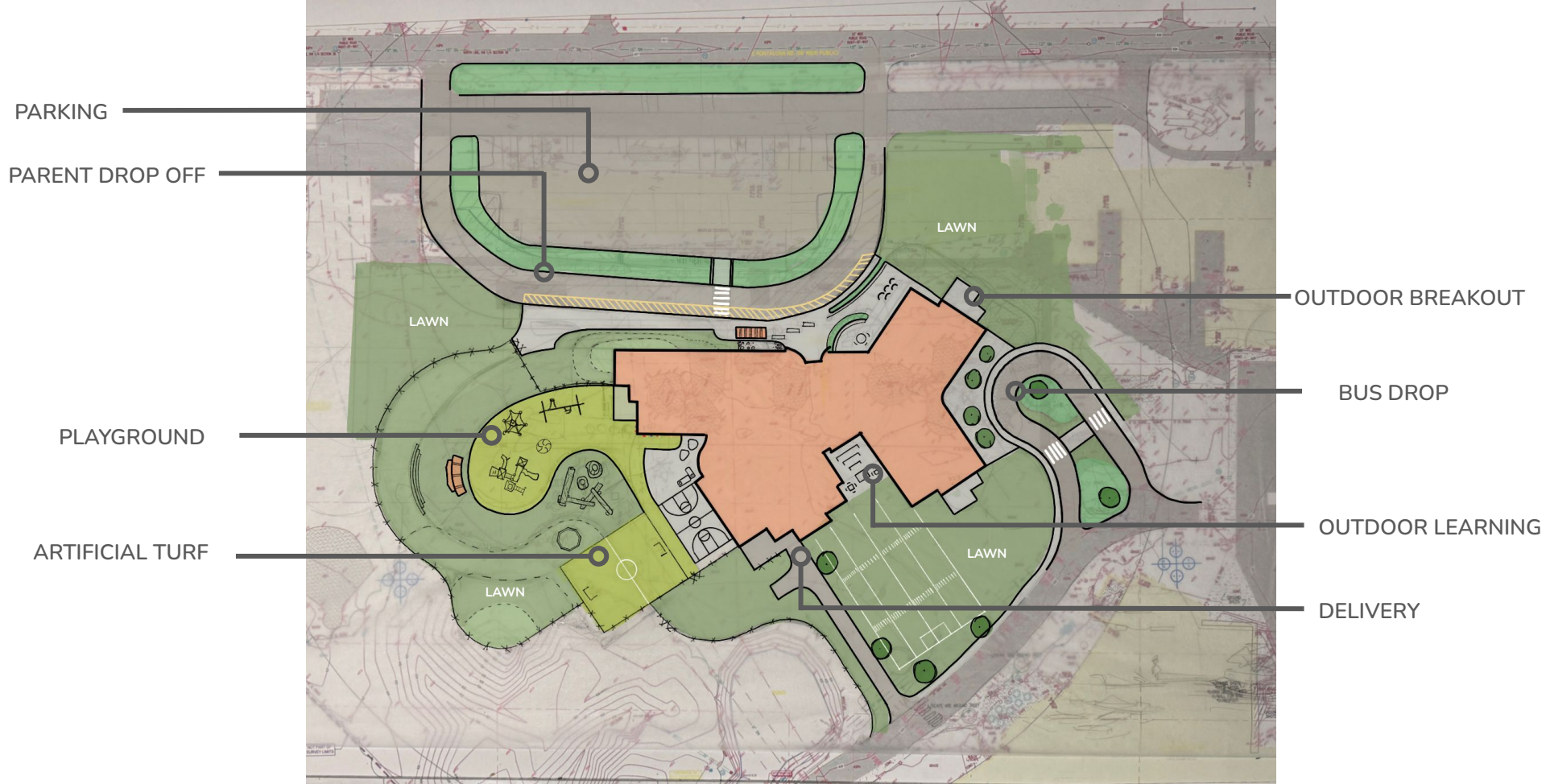


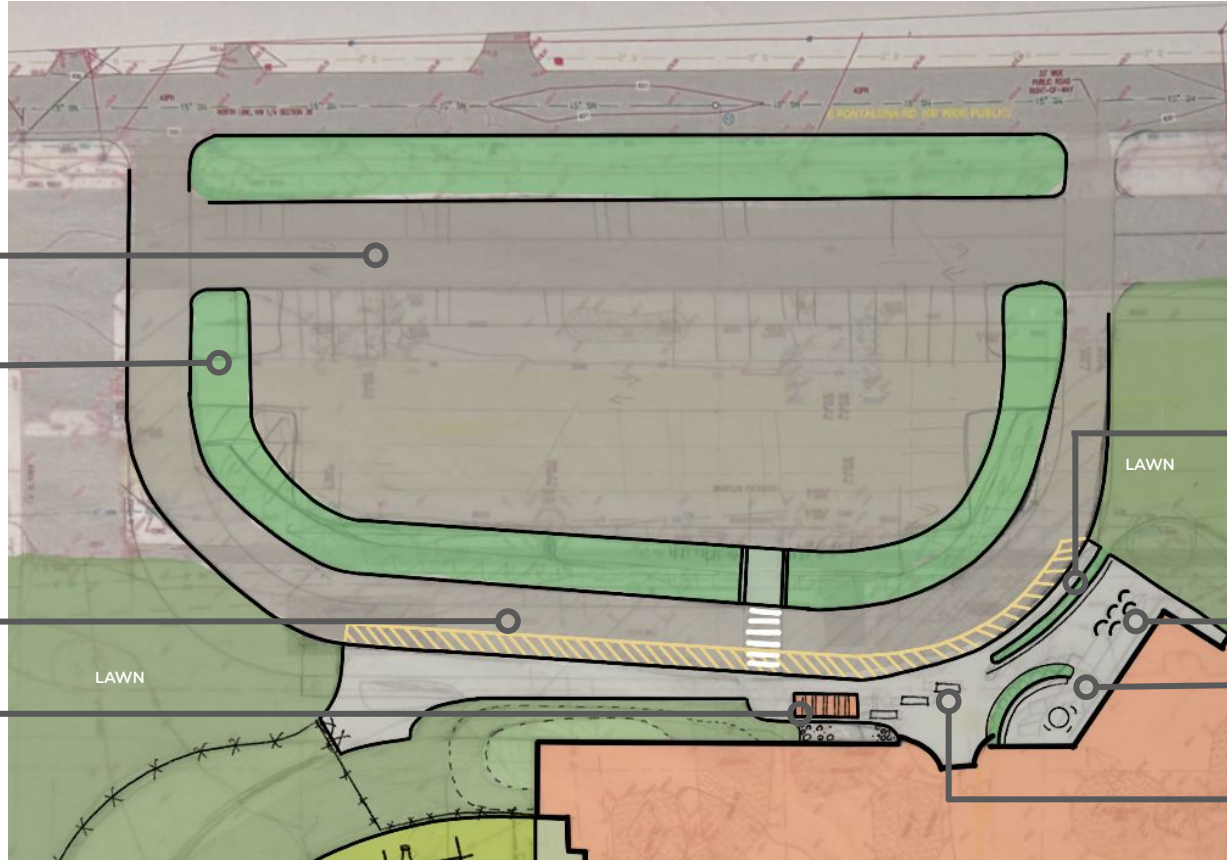




04

Site





PARKING

STORMWATER
MANAGEMENT

PARENT DROP OFF

SHELTER

LAWN

LAWN

STORMWATER
MANAGEMENT

BIKE RACKS

OUTDOOR
BREAKOUT

SECURITY
BARRIER



OUTDOOR BREAKOUT

BUS DROP

PEDESTRIAN
CROSSING

OUTDOOR BREAKOUT

DELIVERY

PLAYGROUND

SHADE STRUCTURE

SEATING

SLEDDING HILL

LAWN

LAWN

LAWN

LAWN

OUTDOOR BREAKOUT

CLIMBING WALL

OUTDOOR LOUNGE

OUTDOOR LEARNING

FENCING





PLAYGROUND

DELIVERIES

BUS DROP

OUTDOOR BREAKOUT

OUTDOOR LEARNING

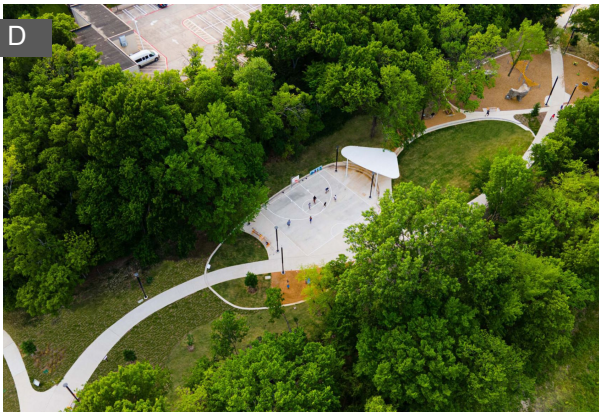
OUTDOOR GYM

LAWN

LAWN

OUTDOOR BREAKOUT







05

Technology



Panduit CAT6 & Fiber
Cabling Infrastructure



Vertiv Liebert UPS
Battery Backups



Tripp Lite Wall-Mount and
Floorstanding Cabinets

INFRASTRUCTURE

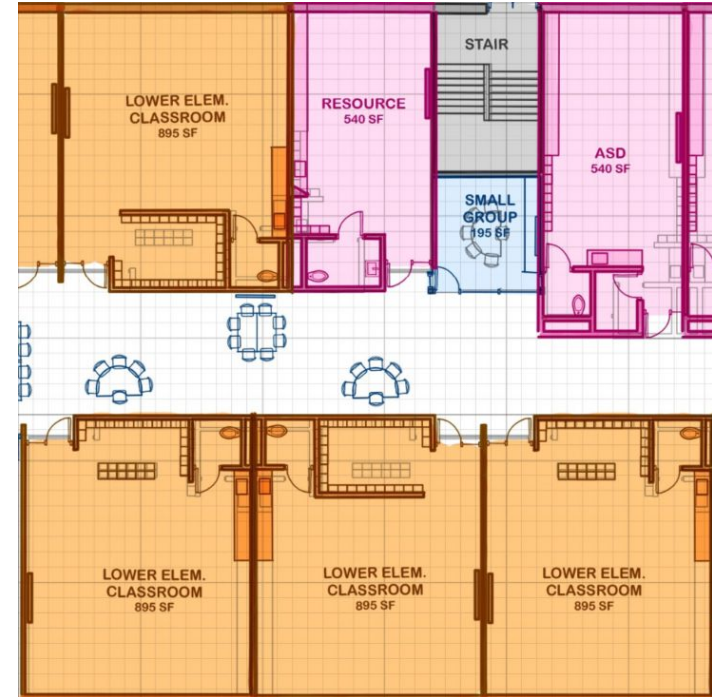
- Fiber to MDF and between each IDF
- CAT6 cabling to all devices
- Devices include:
- Computers/Printers
- Security Cameras
- Wireless Access Points
- Mitel IP Phones
- Audio/Visual Devices
- Electrical & Mechanical Equipment
- Point of Sale

A/V SYSTEMS - CLASSROOMS

- Classrooms will use Audio Enhancement (AE) for voice lift
- Lightspeed will be used in classrooms as a means of two-way communication and integrate with the AE system
- All classrooms will have a Newline Interactive Display that is connected to (4) in-ceiling speakers
- Classroom AV will be controlled with a Pixie+ Controller
- Classrooms will have an Assistive Listening Device Input located at the Teacher's Station
- There will be an HDMI input at each Teacher's Station
- Each classroom will have a mobile cart, in-line with the high school

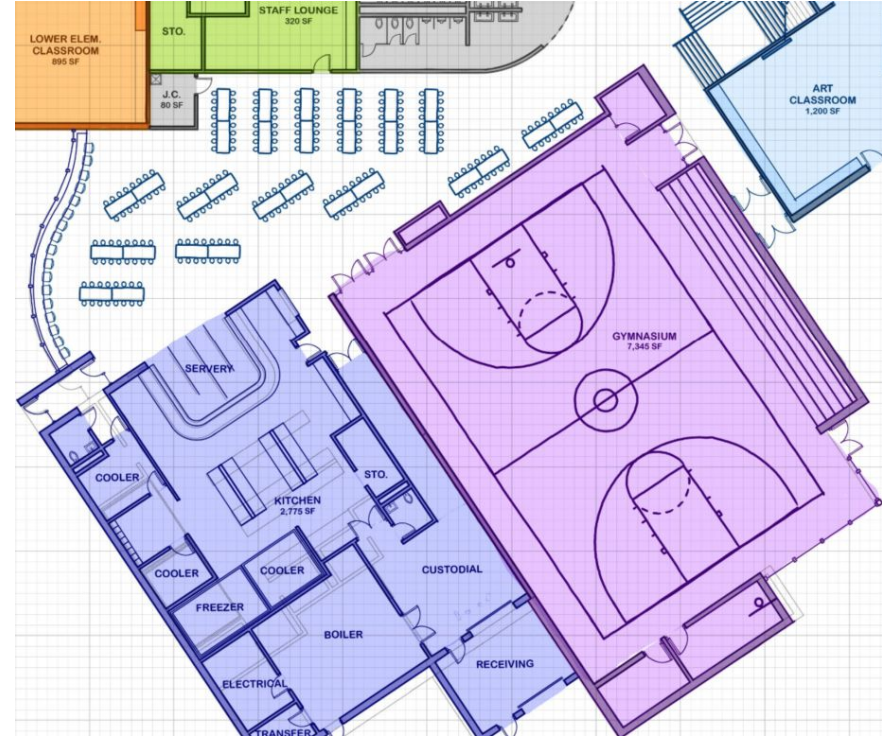
A/V SYSTEMS - CORRIDORS & DIGITAL SIGNAGE

- AE will be used to stream music in-between class periods
- There will be an estimated seven (7) wall-mounted displays in the corridors with BrightSign digital signage
- Reception will also have a display with digital signage
- All Brightsign players will be tied to the access control system to allow a Lockdown image to display



A/V SYSTEMS - GYMNASIUM

- The gymnasium will be equipped with a large-scale projector and motorized screen (minimum 150")
- The projector will be mounted opposite the screen in a protective cage
- The gymnasium will have 6-8 speakers installed from the ceiling / trusses
- The system will have an HDMI input available for direct connectivity between a laptop or other HDMI source
- There will be a wireless mic system installed
- A bluetooth receiver will be installed for music playback
- All equipment will feed back to an AV wall-mounted cabinet
- All classrooms will have a Newline Interactive Display that is connected to (4) in-ceiling speakers



A/V SYSTEMS - CAFETERIA

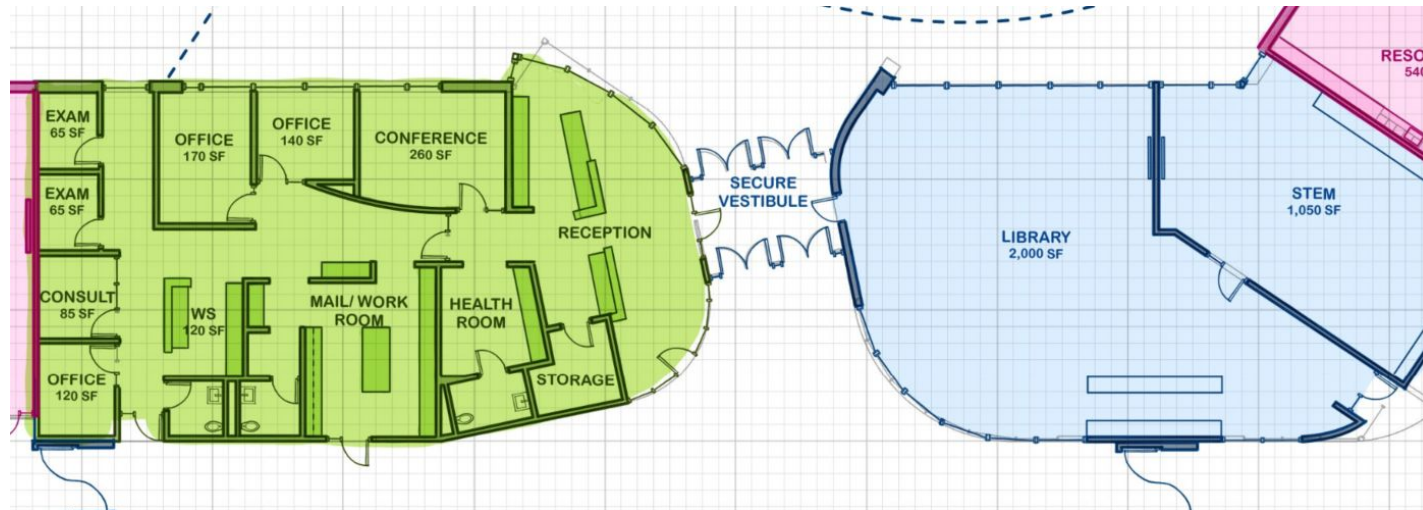
- There will be an estimated three (3) wall-mounted displays in the corridors with BrightSign digital signage
- All Brightsign players will be tied to the access control system to allow a Lockdown image to display
- There will be overhead speakers in this space to stream music

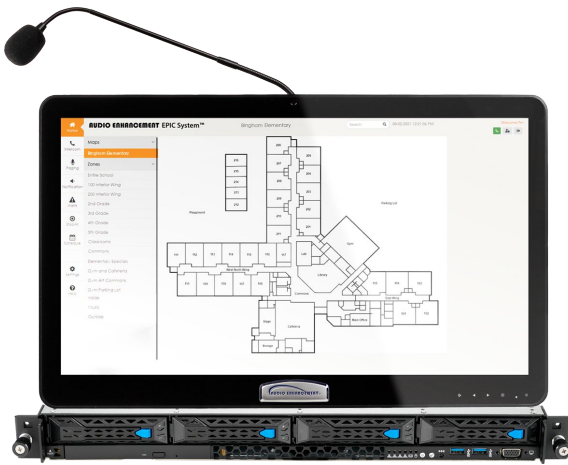
A/V SYSTEMS - CONFERENCE ROOM

- The conference room will have a 75" wall-mounted display with a soundbar / camera installed below for video conferencing
- This room will be set up as a Bring Your Own Device with Google Meet, Zoom and Microsoft Teams capabilities
- There will be an HDMI balun available at the conference table via a floorbox for direct connectivity to the display from user device
- Wireless connectivity will also be available

A/V SYSTEMS - LIBRARY

- The library will have a Newline Q Series 65" display on a mobile cart
- An HDMI cable will be provided directly at the cart





Audio Enhancement
EPIC System



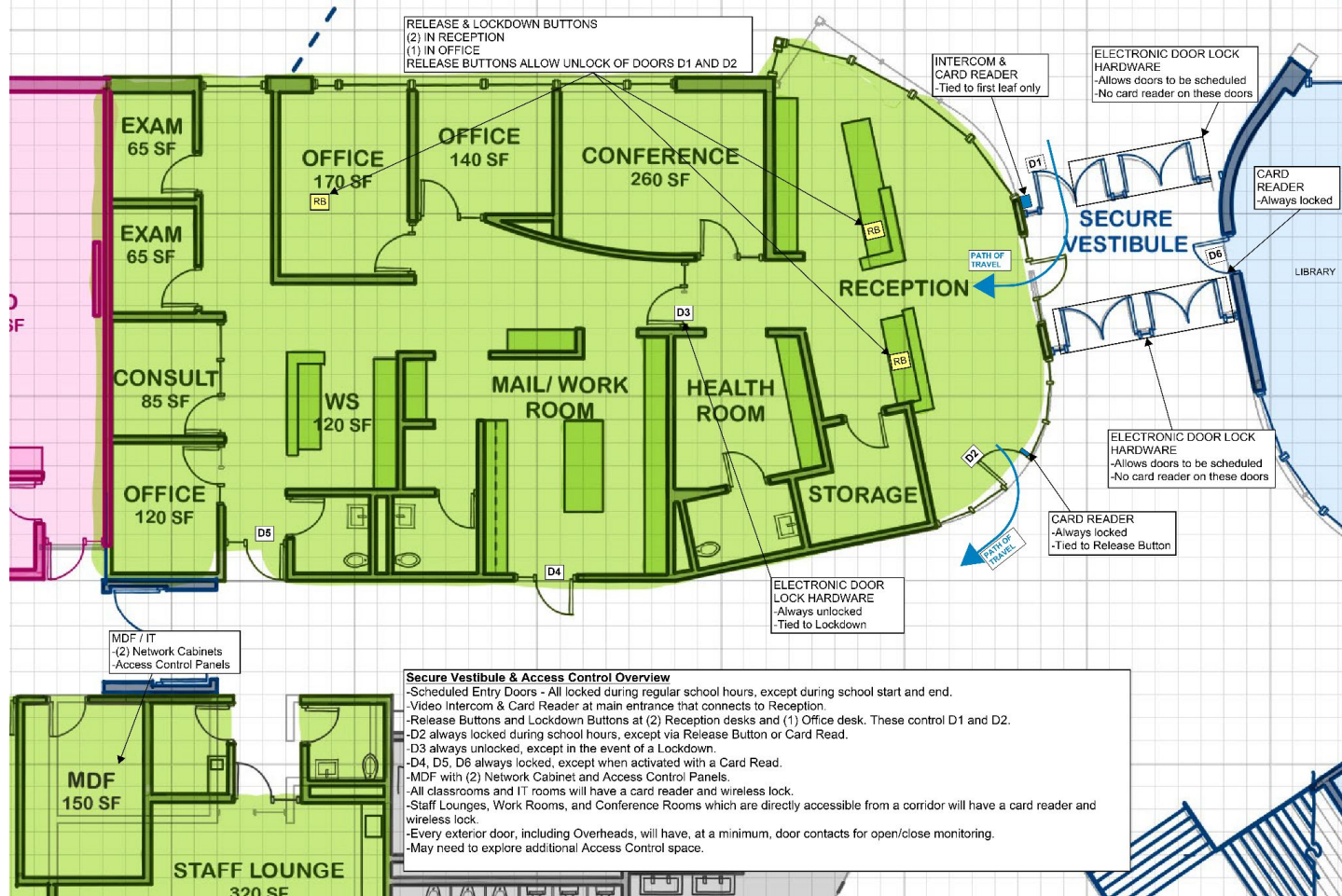
Lightspeed Two-Way
Communication



Primex Clock System (TBD)

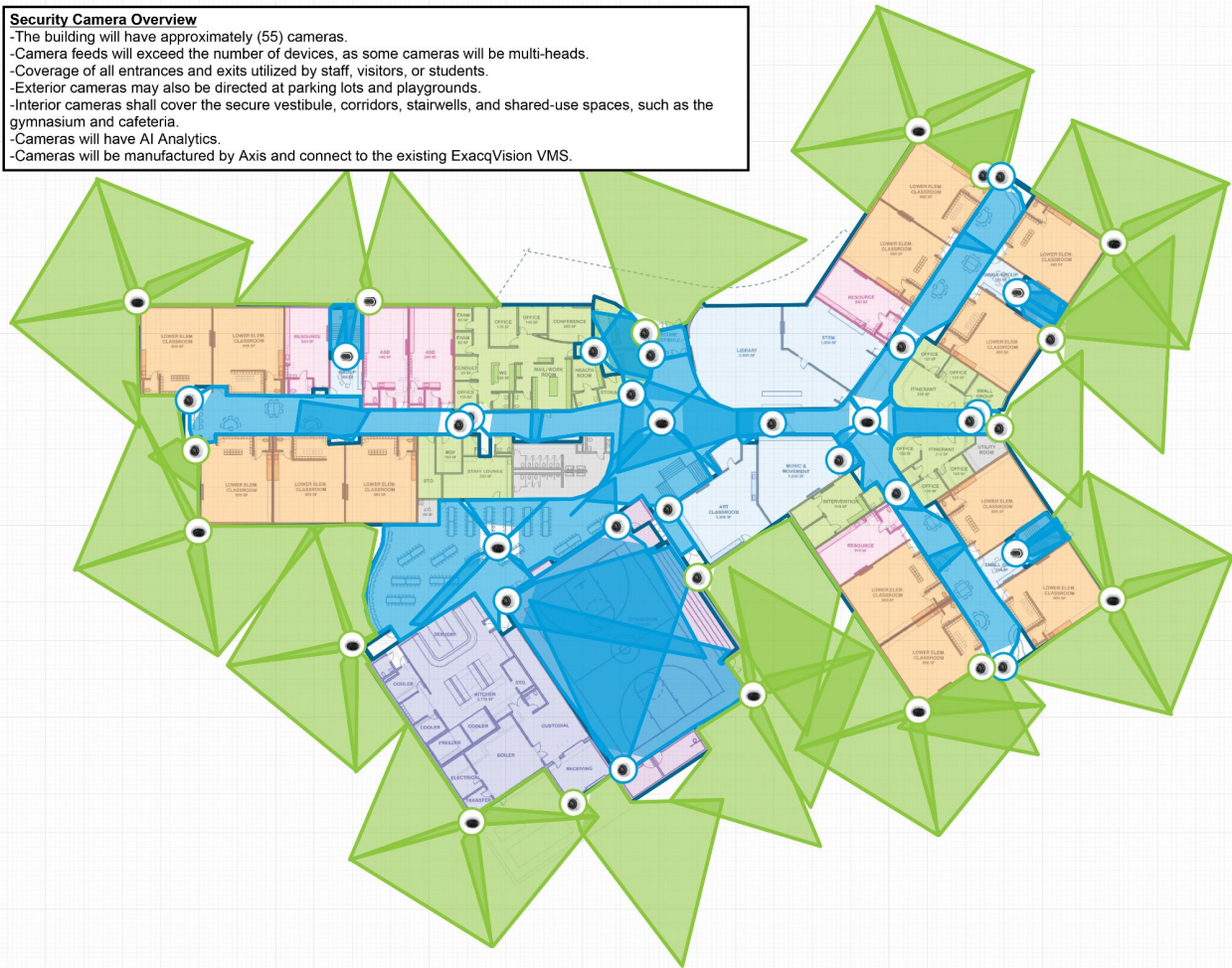
PAGING & CLOCKS

- AE will be used for paging and two-way communication in the main office
- Light speed will be used in classrooms as a means of two-way communication to the office and integrate with the AE system
- Lightspeed will be an instructor-worn device
- The clock system will be powered via POE
- All classrooms will have a digital clock
- Corridors will have digital, dual-sided clocks
- Offices, reception, the library, and other miscellaneous rooms will also have clocks installed similar to the classrooms
- The gymnasium will have a minimum of two (2) digital clocks installed with a protective cage
- Clock manufacturer is TBD



Security Camera Overview

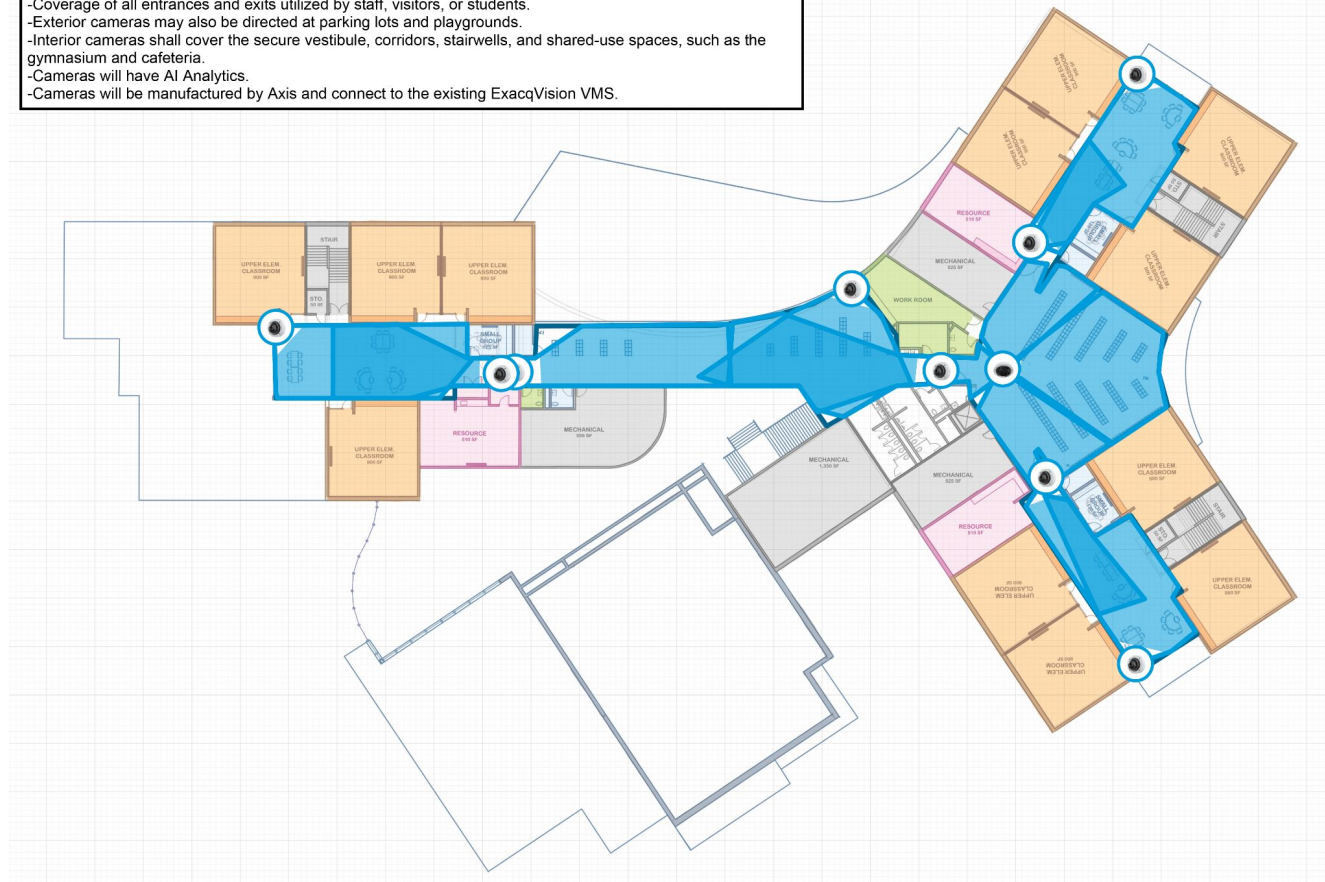
- The building will have approximately (55) cameras.
- Camera feeds will exceed the number of devices, as some cameras will be multi-heads.
- Coverage of all entrances and exits utilized by staff, visitors, or students.
- Exterior cameras may also be directed at parking lots and playgrounds.
- Interior cameras shall cover the secure vestibule, corridors, stairwells, and shared-use spaces, such as the gymnasium and cafeteria.
- Cameras will have AI Analytics.
- Cameras will be manufactured by Axis and connect to the existing ExacqVision VMS.



PRELIMINARY CAMERA COVERAGE - MAIN FLOOR

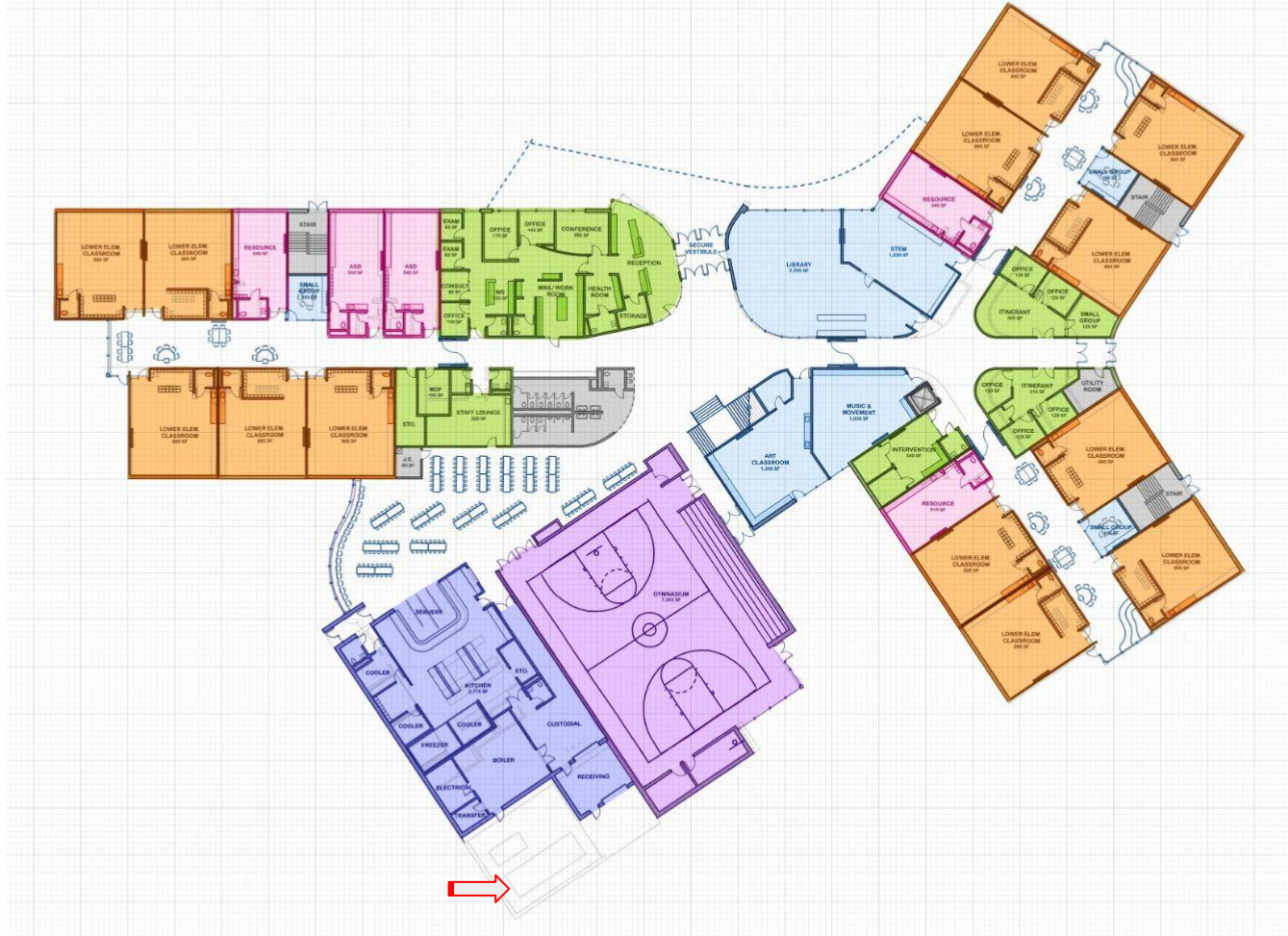
Security Camera Overview

- The building will have approximately (55) cameras.
- Camera feeds will exceed the number of devices, as some cameras will be multi-heads.
- Coverage of all entrances and exits utilized by staff, visitors, or students.
- Exterior cameras may also be directed at parking lots and playgrounds.
- Interior cameras shall cover the secure vestibule, corridors, stairwells, and shared-use spaces, such as the gymnasium and cafeteria.
- Cameras will have AI Analytics.
- Cameras will be manufactured by Axis and connect to the existing ExacqVision VMS.

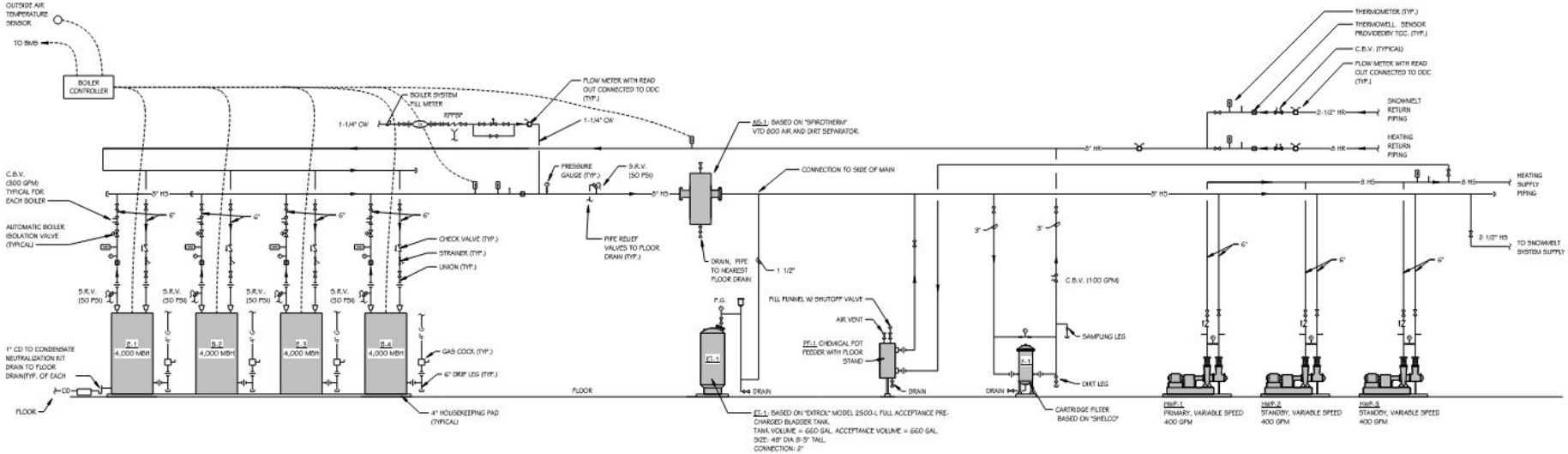


06

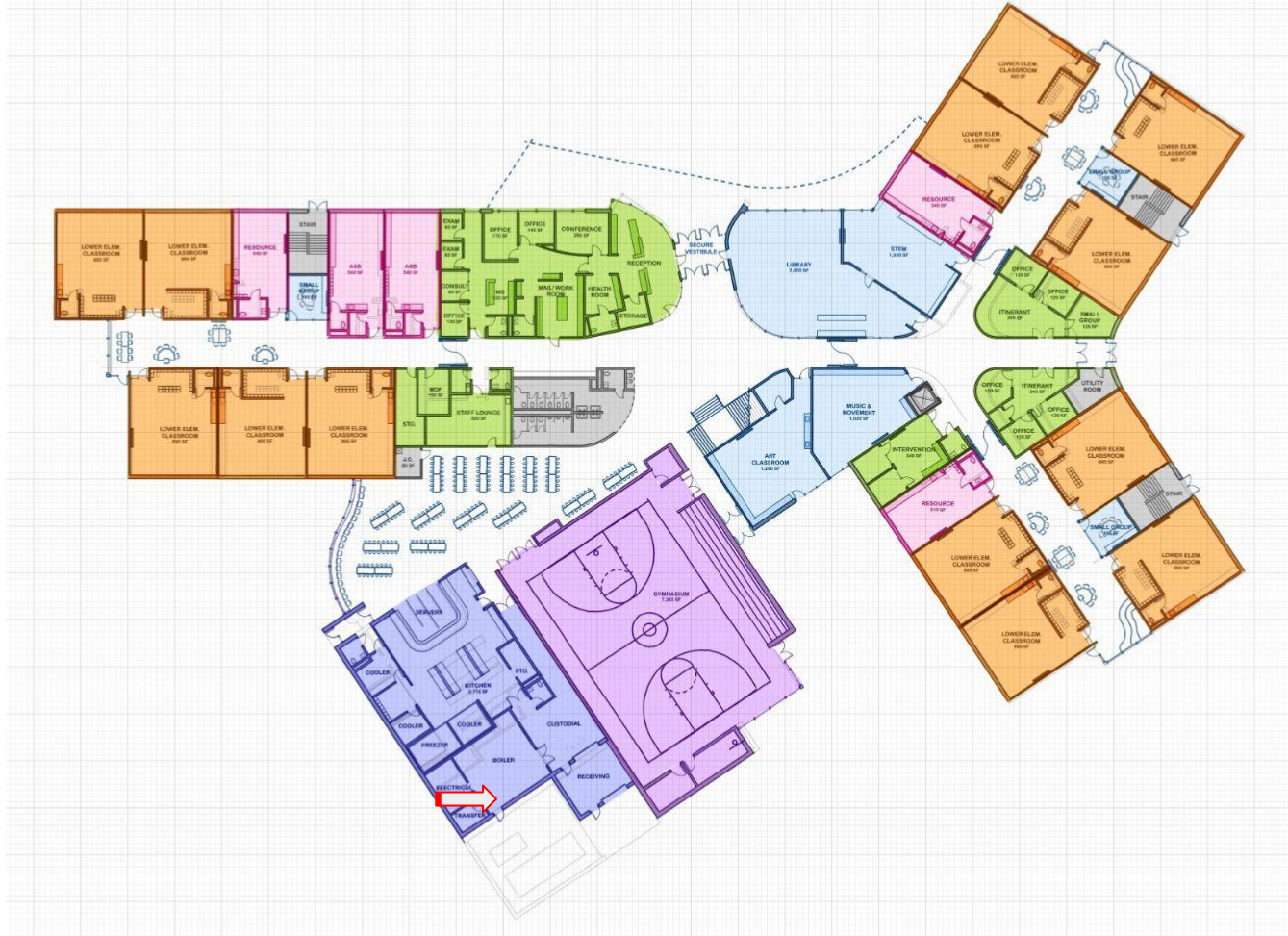
MECHANICAL



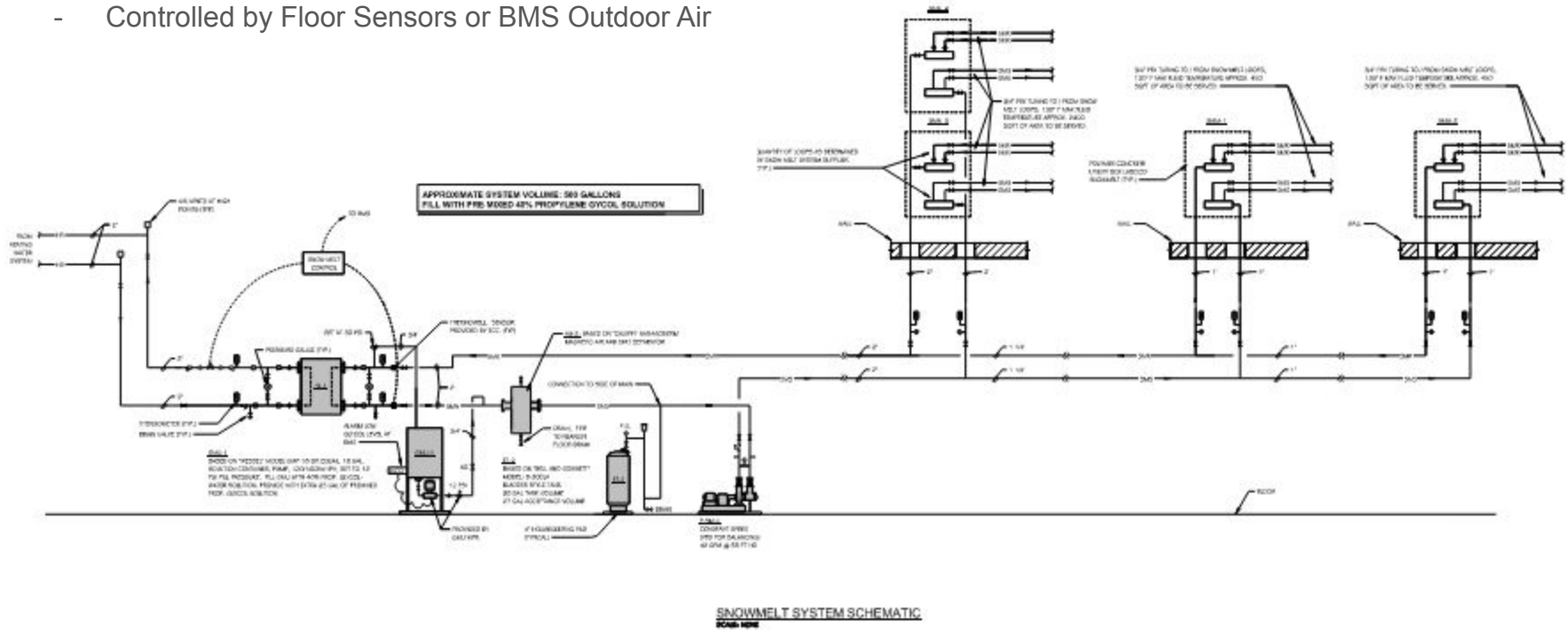
- Current BMS at Highschool and Existing MS

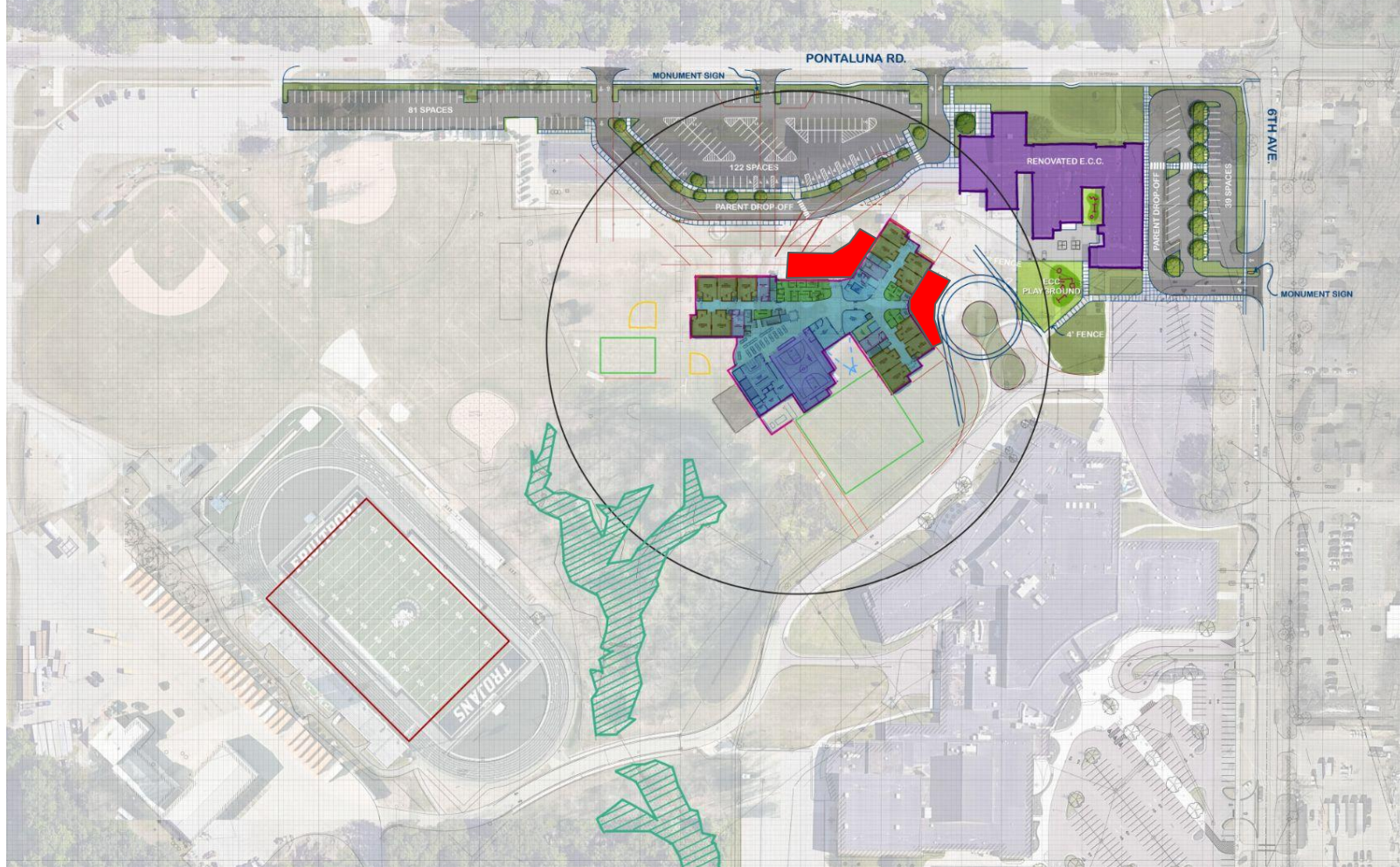


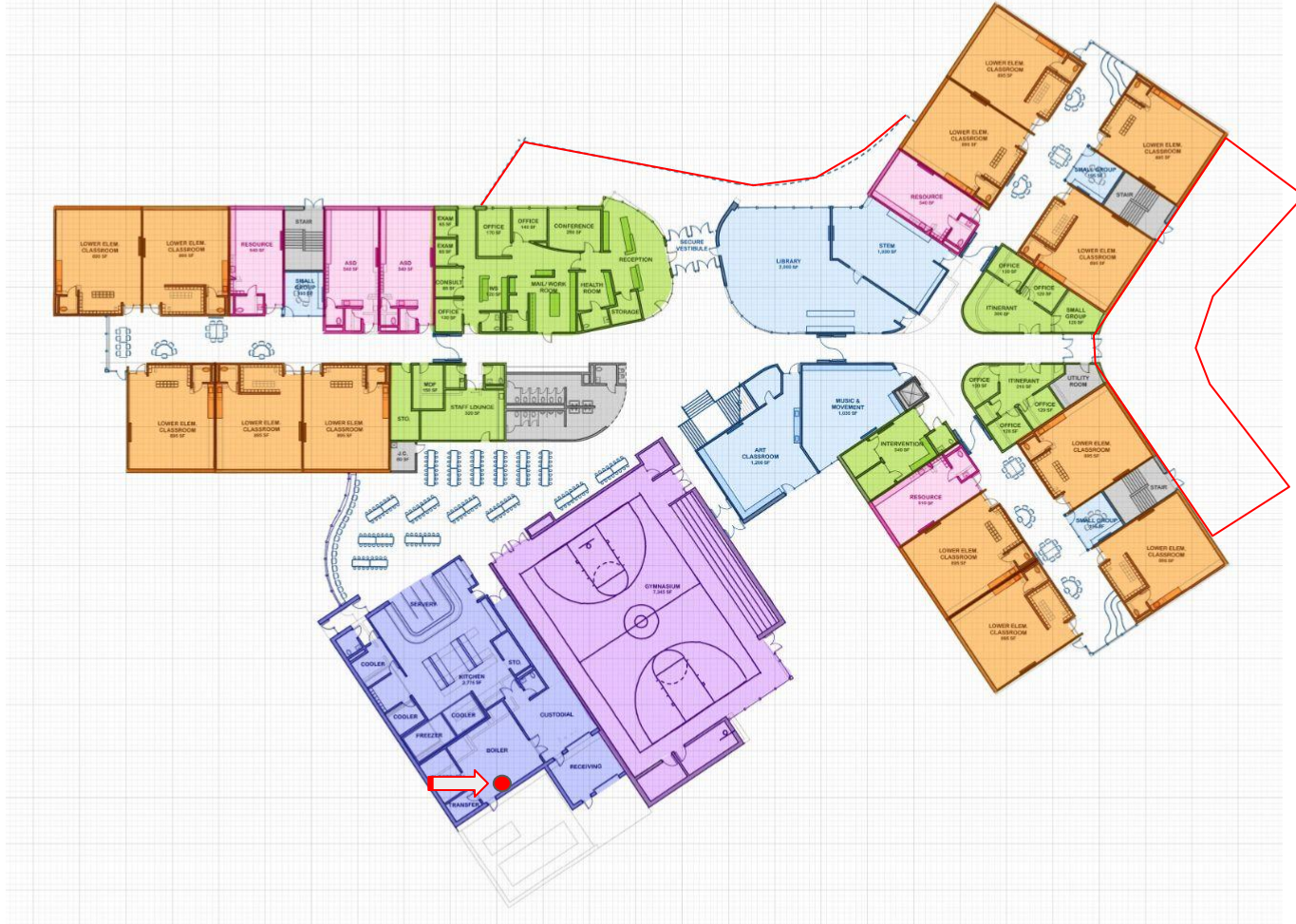
HEATING WATER SYSTEM SCHEMATIC

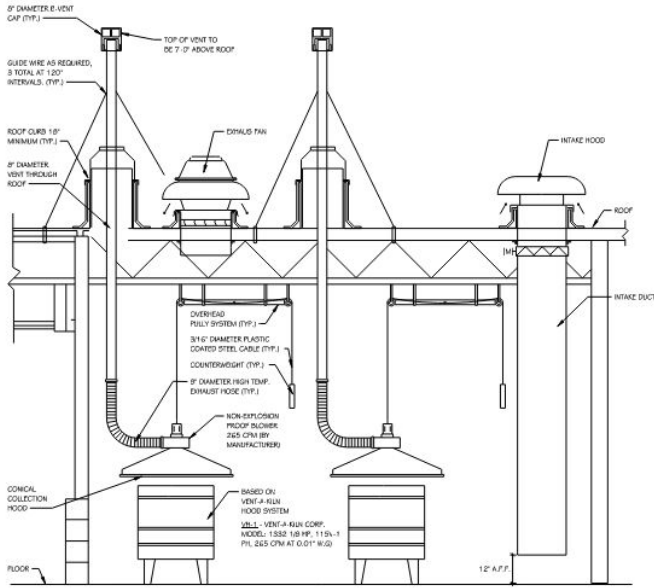


- Controlled by Floor Sensors or BMS Outdoor Air









KILN HOOD VENTILATION DETAIL
SCALE NONE



07

ELECTRICAL



TowerPinkster 45
Architecture · Engineering · Interiors

ELECTRICAL MANUFACTURERS REVIEW:

- Electrical Switchgear and Panel Manufacturer
- Fire Alarm System
- Lighting Controls Manufacturer
- Copper vs. Aluminum

Electrical Code Review:

- ASHRAE Controlled Receptacles
- ASHRAE Metering
- Generator (Emergency and Standby)
 - Emergency - Lighting
 - Standby - Boiler, Boiler pump, cooler/freezer, MDF and IDF closets
 - Fire pump - Generator and directly to utility power

08

Building Operations

Fruitport Community Schools - Edgewood Elementary Design Schedule

		SD Mtg #2	SD Mtg #3	SD Mtg #4	SD Mtg #5	DD Mtg #1	DD Mtg #2	DD Mtg #3	DD Mtg #4	DD Mtg #5
	TIME / DATE	January 07	January 28	February 11	March 04	March 25	April 15	May 06	May 13	May 27
DESIGN	7:00 AM									
	7:30 AM									
	8:00 AM	Typical Classrooms	Review Updated Floor Plan	Building Floor Plan Review	SD Page Turn	SD Budget Review & Revisions	Typical Classrooms	Review Updated Floor Plan	DD Page Turn	DD Budget Review & Revisions
	8:30 AM									
	9:00 AM	Specials - Music	Building Exteriors	Site			Specials - Music	Building Exteriors		
	9:30 AM	Specials - Art		Specials - Art			Building Exteriors			
	10:00 AM	Specials - STEM	Building Interiors	Interiors			Specials - STEM	Building Interiors		
	10:30 AM	Specials - Gym		Specials - Gym	Building Interiors					
	11:00 AM	Media Center	Site	Building Ext./Massing	Media Center	Site				
	11:30 AM	Administration			Administration	Site				
	12:00 PM	Lunch	Lunch	Lunch	Lunch	Lunch				
	12:30 PM	Itinerant Staff	Technology	Building Operations			Itinerant Staff	Technology		
	1:00 PM									
	1:30 PM	Special Education	Mechanical	Next Steps			Special Education	Mechanical		
	2:00 PM									
	2:30 PM	Playgorunds	Building Operations	Playgorunds			Building Operations			
	3:00 PM	Cust./Maint.	Electrical	Cust./Maint.			Electrical			
	3:30 PM	Next Steps	Next Steps	Next Steps			Next Steps			