



FRUITPORT COMMUNITY SCHOOLS

DISCOVERY TOURS
December 8, 2025

in partnership with
TowerPinkster



TOUR SCHEDULE

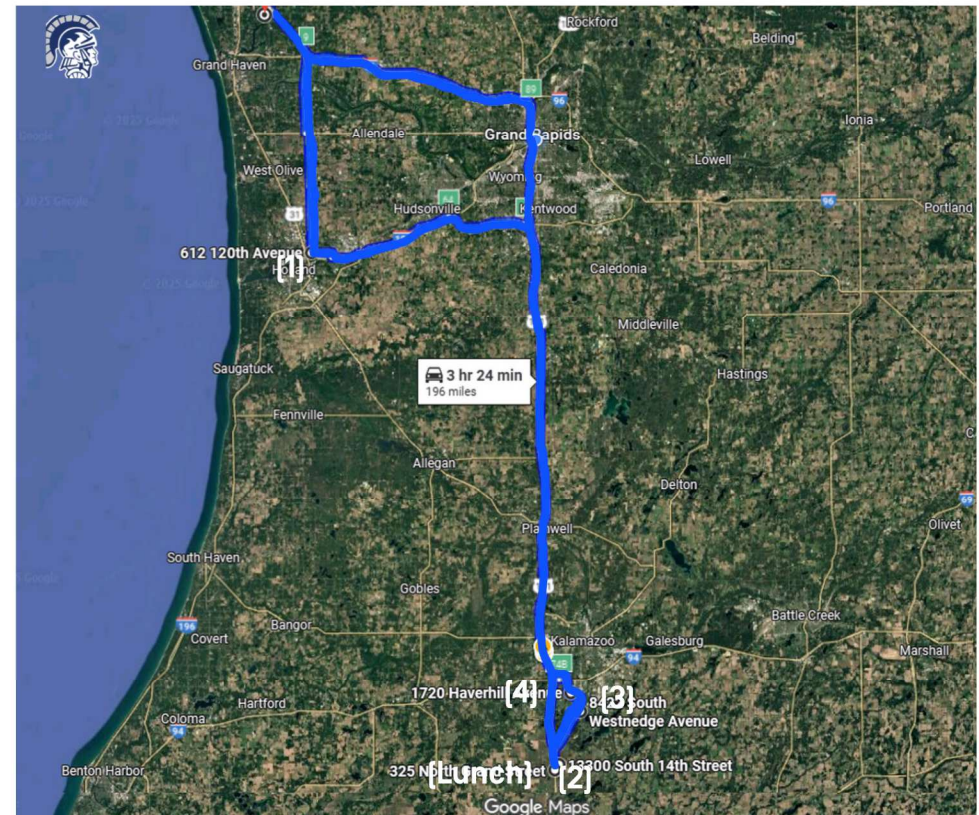
- 7:45 am** **Meet at Administration Building**
3255 E. Pontaluna Rd., Fruitport, MI 49415
- 8:00 am** **Travel to West Ottawa Riley Farms**
612 120th Ave, Holland, MI 49424
- 8:30 am** **[1] Tour Riley Farms**
- 9:45 am** **Travel to Schoolcraft Elementary School**
13300 S. 14th St., Schoolcraft, MI 49087
- 11:00 am** **[2] Tour Elementary School**
- 12:15 pm** **Lunch at Mar-Jo's Diner**
325 N Grand St. Schoolcraft, MI 49087
- 1:30 pm** **Travel to Portage Central Elementary**
8422 S. Westnedge Ave, Portage, MI 49002
- 1:50 pm** **[3] Tour Central Elementary**
- 3:00 pm** **Travel to Administration Building**
- 4:15 pm** **Arrive at Administration Building**

FRUITPORT COMMUNITY SCHOOLS

DISCOVERY TOUR

Today's benchmarking tour is an exciting opportunity for Fruitport administrators and staff to explore schools across Michigan. Our design team has selected schools that have successfully implemented new learning trends through bond-funded projects, ensuring you see the most relevant and innovative examples.

Our goal is to inspire and equip you with fresh perspectives and a visionary approach as we transform the elementary school into a modern learning environment. After each visit, please use the QR codes to complete the survey and provide your valuable feedback.



WEST OTTAWA RILEY FARMS

WEST OTTAWA PUBLIC SCHOOLS

Grades: PK-5 | **Student Capacity:** 550 | **Size:** 79,000 SF

Riley Farms Elementary is West Ottawa's newest K-5 school, having opened in Fall 2025 with a state-of-the-art facility designed to support dynamic and student-centered learning. The school launched an outdoor-focused curriculum beginning in kindergarten, created in collaboration with the Outdoor Discovery Center to foster curiosity, resilience, and hands-on learning in nature.

Riley Farms will also offer advanced math placement, SAIL programming for 3rd-5th grade students, and engaging before and after-school options through Panther Pathways.

NOTES



Scan the QR Code to take the survey or visit the link below:
forms.gle/kKmNqz6BkTvZvxzN7

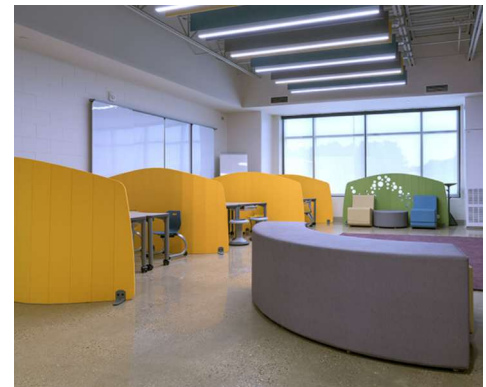


SCHOOLCRAFT ELEMENTARY
SCHOOLCRAFT COMMUNITY SCHOOLS

Grades: PK-6 | **Student Capacity:** 606 | **Size:** 120,000 SF

The design of the new Schoolcraft Elementary is a direct response to interactive visioning with the community and district. Areas of importance for the community were varied, and the district used this feedback to develop a series of promises to deliver: an inviting exterior with a dedicated kindergarten playground; a welcome center that honors the past; flexible space for food, friends, and fun; a media center highlighting a new experience of learning; playgrounds harnessing the power of play; a competition gym to serve all Eagles; classroom collaboration ideal for agile and adaptable learners; STEM and art labs providing hands-on learning for all; and a commons space dedicated to collaboration, communication and creativity.

NOTES



Scan the QR Code to take the survey or visit the link below:
forms.gle/MG34obPuDBsgYRp68

CENTRAL ELEMENTARY

PORTAGE PUBLIC SCHOOLS

Grades: PK-5 | **Student Capacity:** 600 | **Size:** 76,817 SF

The new elementary building is centered around flexible learning spaces that can actively engage young learners. The new classroom environments are designed to be technology-rich and support numerous learning modalities, including independent and team-based learning. Breakout areas, cozy nooks, and open spaces are included beyond traditional classrooms to stimulate creativity and critical thinking.

Construction is underway and is expected to be complete in fall 2025.

NOTES



Exterior



Commons



Studio



Heart



Central Elementary



Scan the QR Code to take the survey or visit the link below:
forms.gle/YMfuDdpssG5x9XcA6

CENTRAL ELEMENTARY



CENTRAL ELEMENTARY

